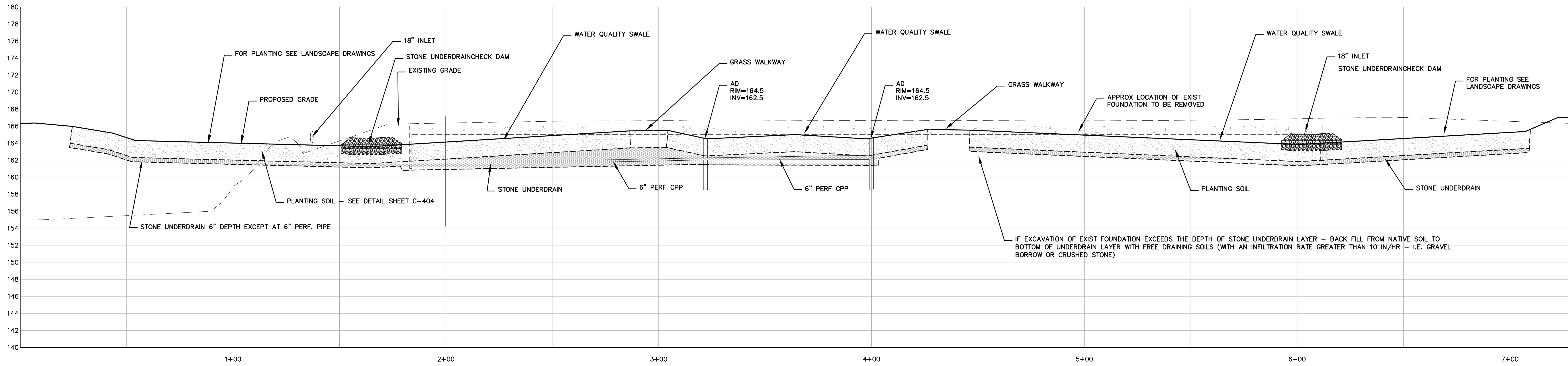
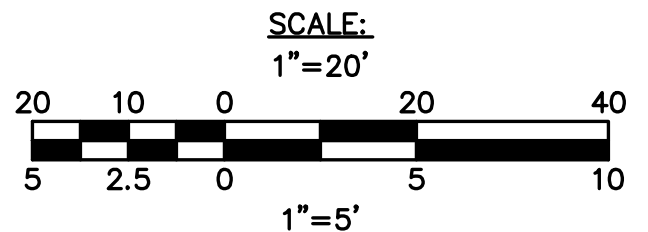


PLAN VIEW



SECTION A-A WATER QUALITY SWALE
INFILTRATION BASIN



Architect:
omr architects inc
 543 Massachusetts Ave, West Acton, MA 01720
 www.omr-architects.com t: 978.264.0160

Consulting Engineer:
Nitach Engineering
 www.nitacheng.com
 186 Lincoln Street, Suite 200
 Boston, MA 02111-2629
 T: (617) 338-0063
 F: (617) 338-0172

Registration:
DESIGN DEVELOPMENT SUBMISSION

Project Name and Address:
Concord-Carlisle Regional High School
 500 Walden Street, Concord, MA 01742

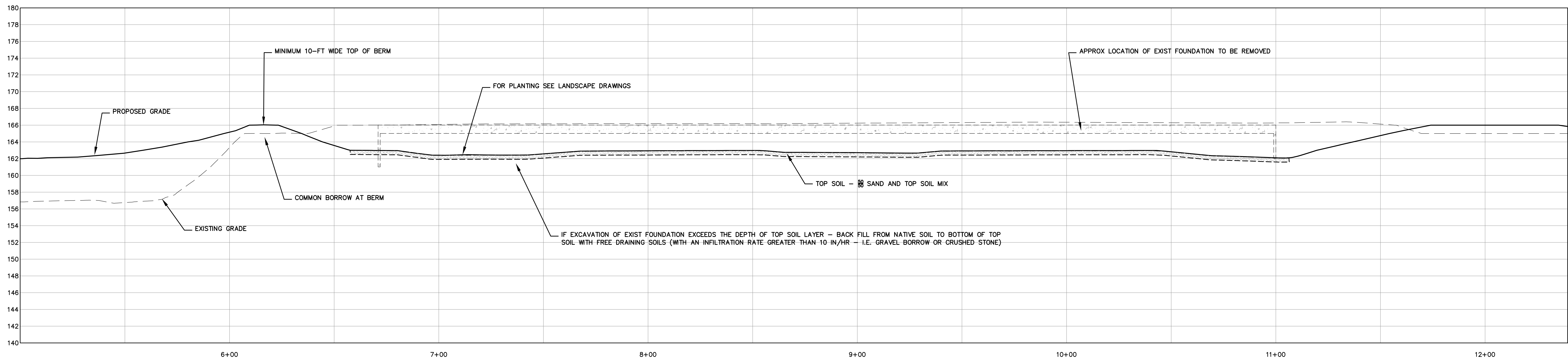
Issue Submissions:

No.	Date	Description

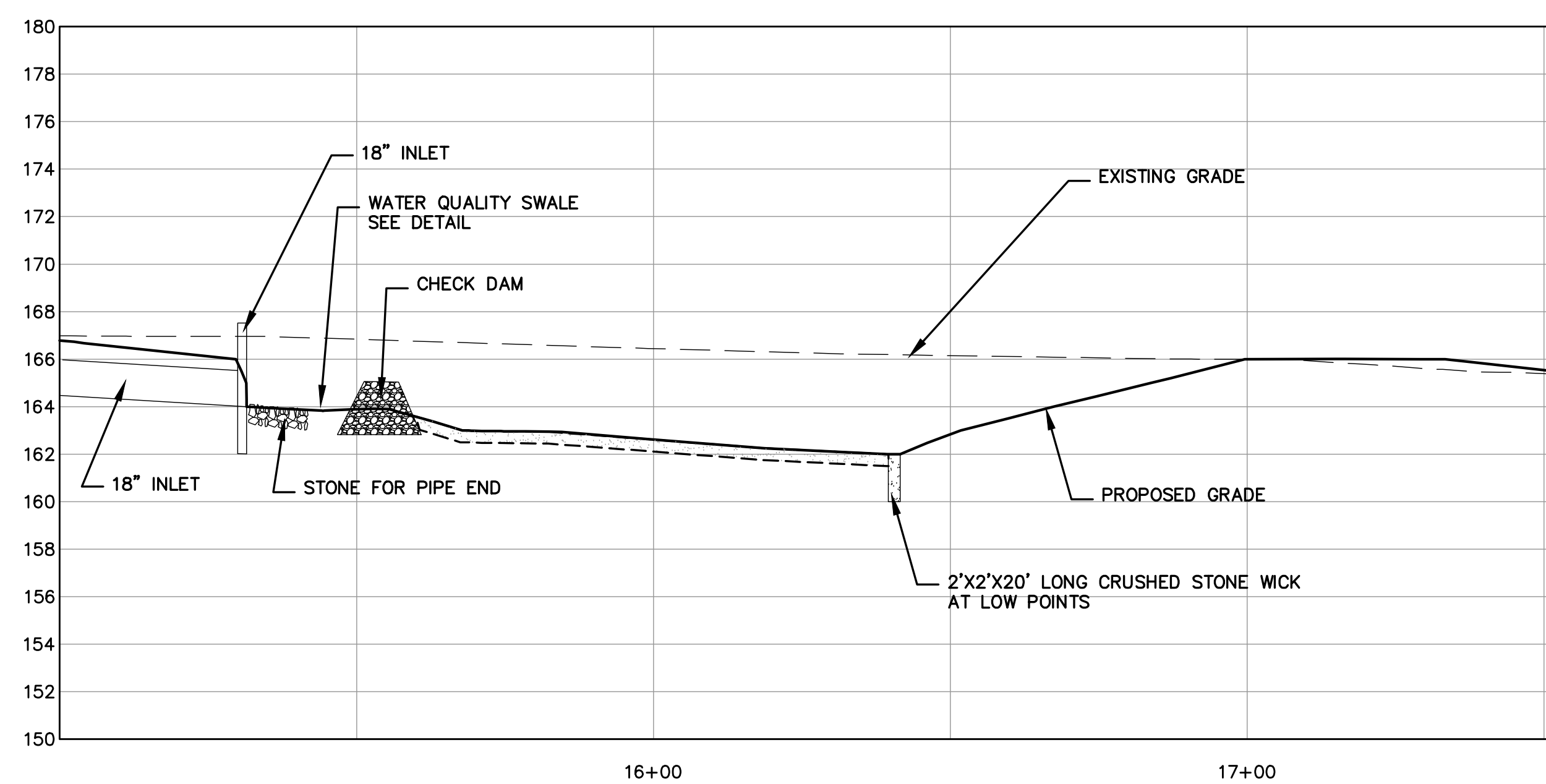
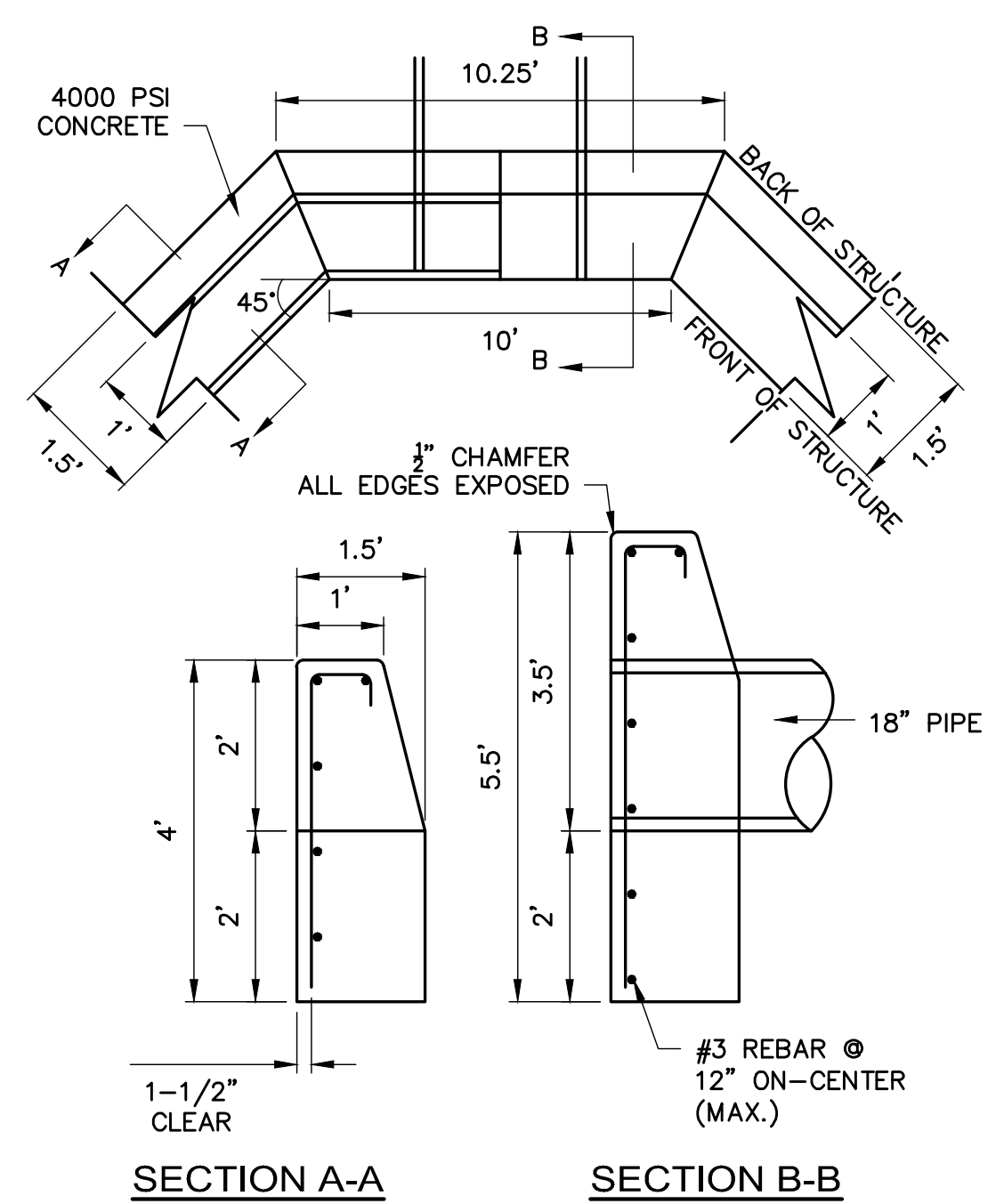
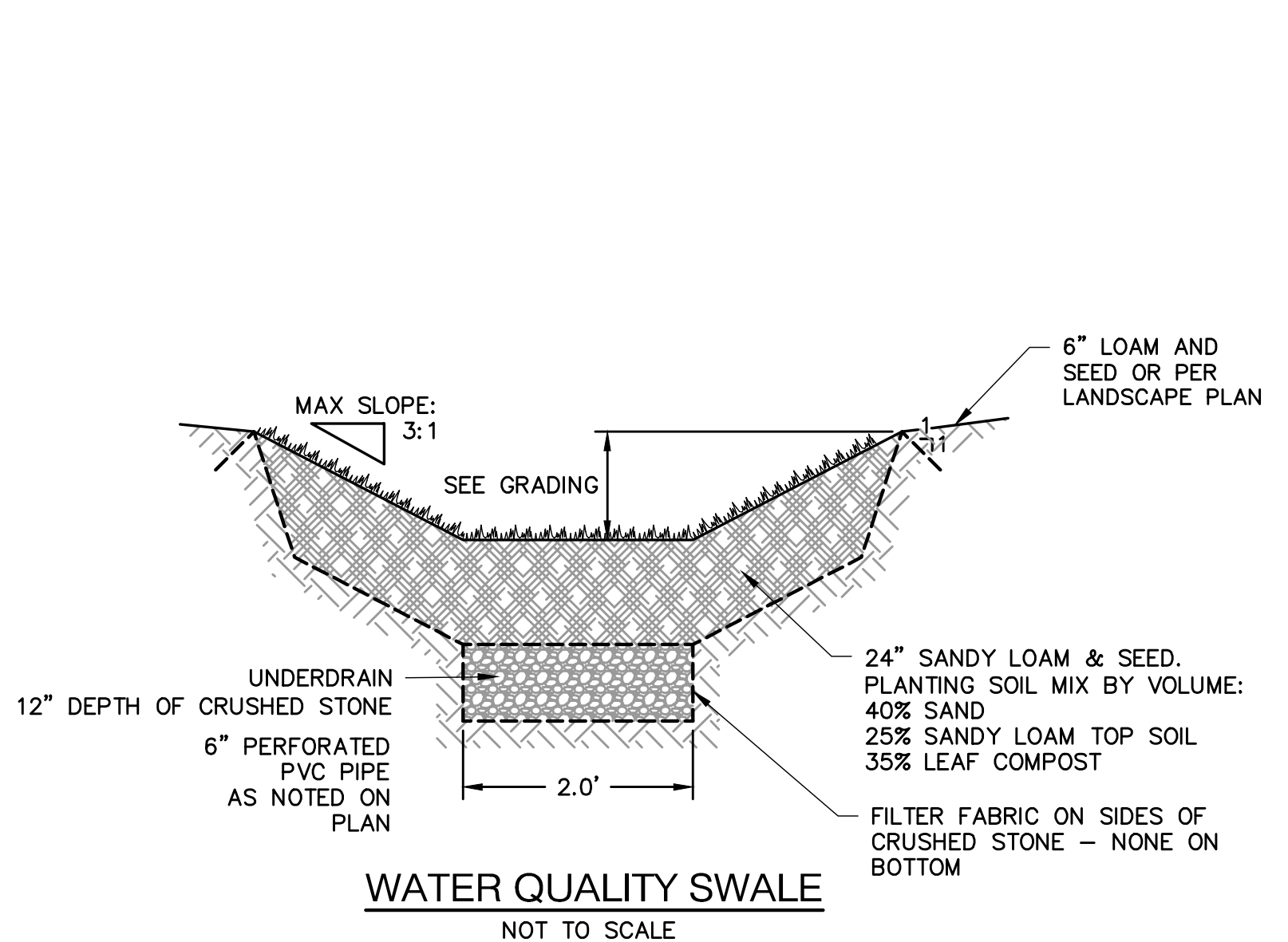
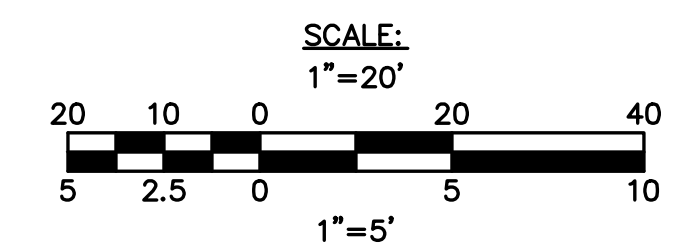
Title:
DRAINAGE SECTIONS INFILTRATION BASIN SECTIONS A-A

Date: August 15, 2012
 Scale: AS NOTED
 Drawn: SV
 Checked: Checker

Project No.: 1102.00
 Drawing No.: **C-503**
 © omr architects inc



SECTION B-B
INFILTRATION BASIN



SECTION C-C
INFILTRATION BASIN

